



Leading for Better Health

Pennsylvania Hospital Trends 2006–2016

October 2017

Pennsylvania Hospital Transformation 2006–2016

Pennsylvania hospitals and health systems have worked to ensure appropriate utilization of the health care delivery system and more efficient use of resources through advances in medicine and technology.

During the past decade in Pennsylvania:

- The number of general acute care hospitals has declined 6%
- The number of licensed (general acute care) beds has decreased by 5%
- Inpatient utilization has declined; inpatient admissions decreased 12% and inpatient days decreased 15%
- Average lengths of stay have varied from year to year
- Outpatient utilization has increased

Pennsylvania Hospital Emergency Department Transformation 2006–2016

Use of hospital emergency departments continues to increase while the number of available emergency departments has decreased. Calendar year 2016 reflected the highest emergency department visits per 1,000 population over the past decade. At the same time, the number of admissions from the emergency department has declined.

Since 2006, in Pennsylvania general acute care hospitals:

- ❑ The number of emergency department visits overall (per 1,000 population) has **increased** by 13%
- ❑ The number of admissions from the emergency department has **decreased** by more than 4%
- ❑ The number of hospital emergency departments has **decreased** by 8%

Pennsylvania Hospital Transformation

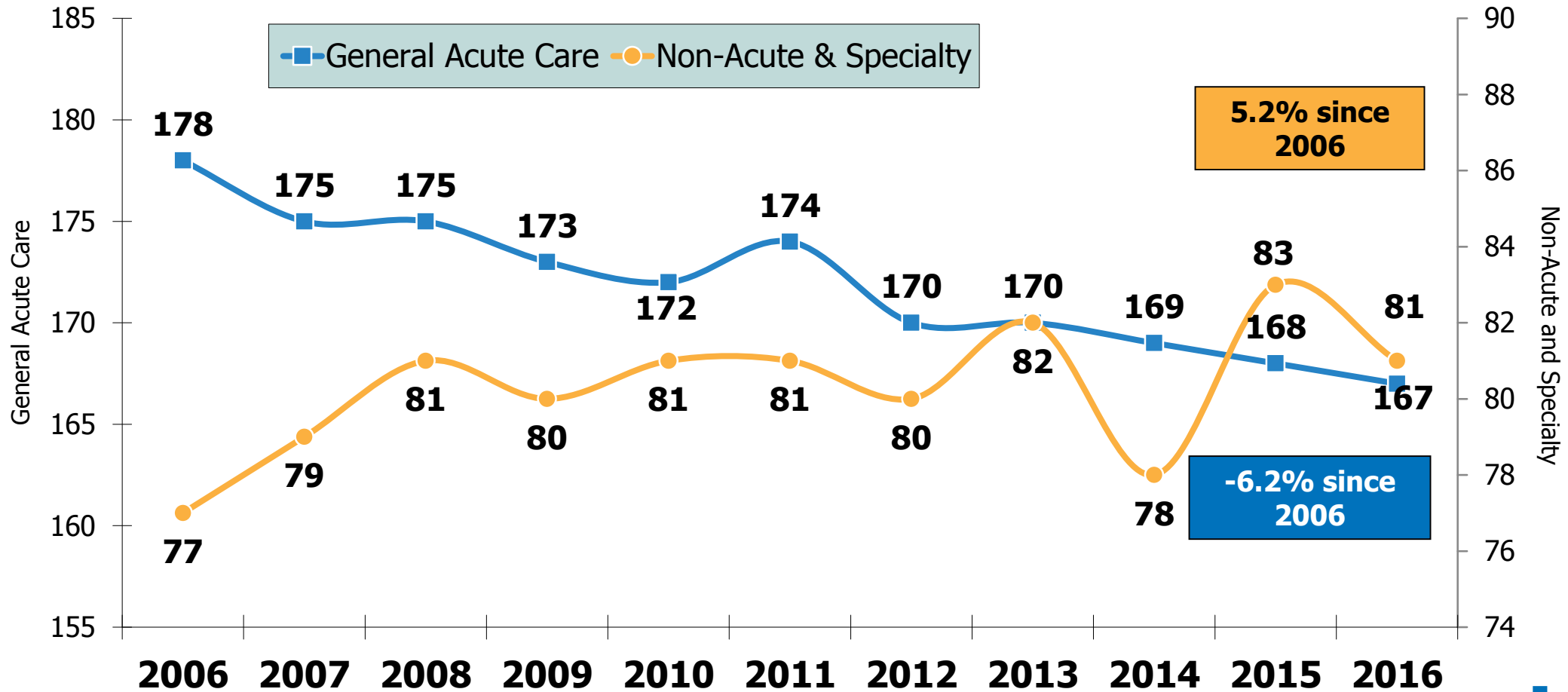
Other Trends 2006–2016

During calendar year 2016:

- Outpatient surgeries at general acute care hospitals **declined** in 2016, after five years of increases
- The number of free-standing ambulatory surgical centers in Pennsylvania continues to grow
- Statewide hospital outpatient revenue continues to grow, comprising 46.7% of total hospital revenue (during 2015)
- Since implementation of the Affordable Care Act health insurance coverage provisions in 2014, hospital uncompensated care in general acute care hospitals **declined by 21%**
- Pennsylvania's birth rate began declining in 2009 but, since 2012, has been relatively stable

Source: Pennsylvania Department of Health

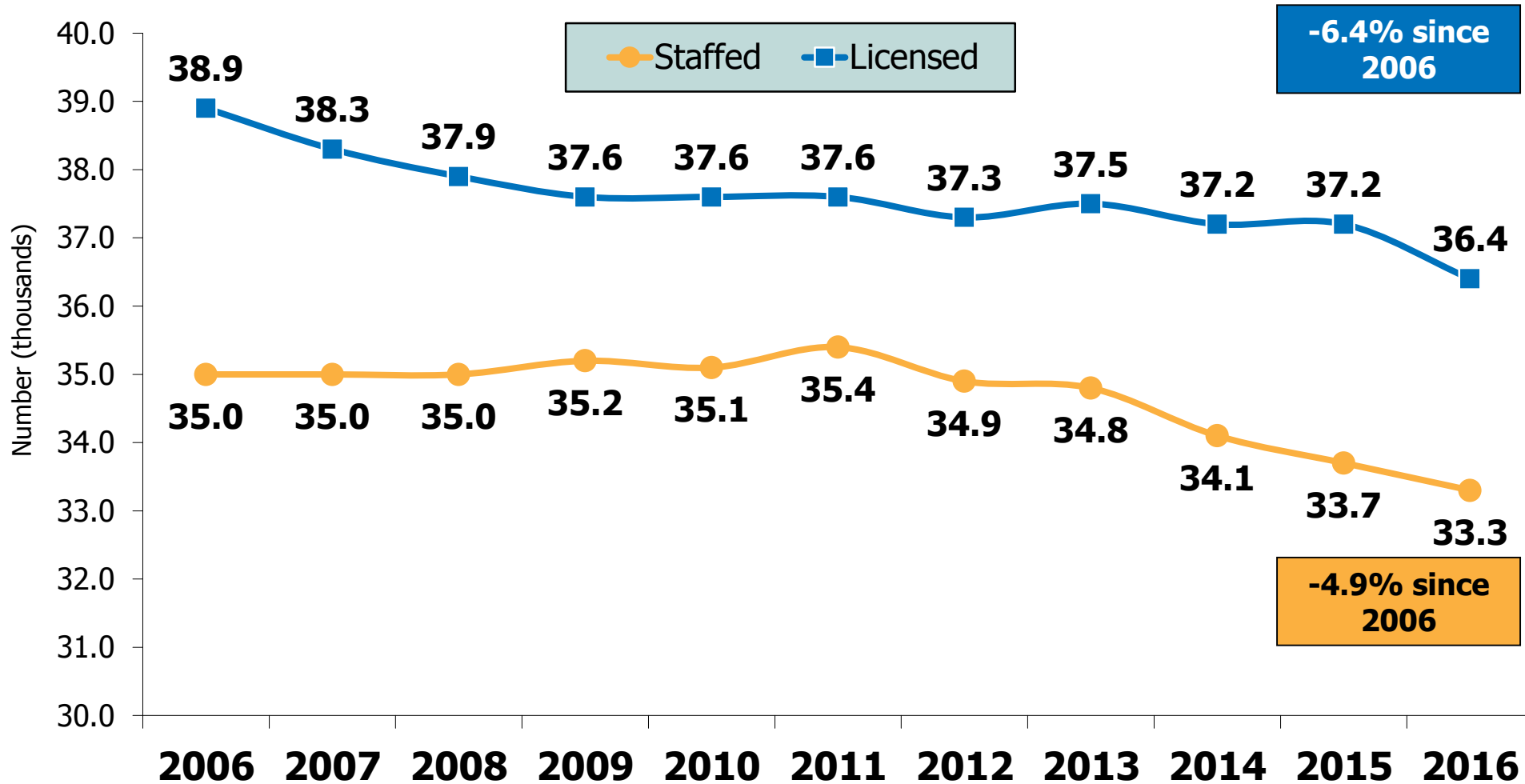
Number of Pennsylvania Hospitals



Source: Pennsylvania Department of Health

Reductions in Bed Capacity

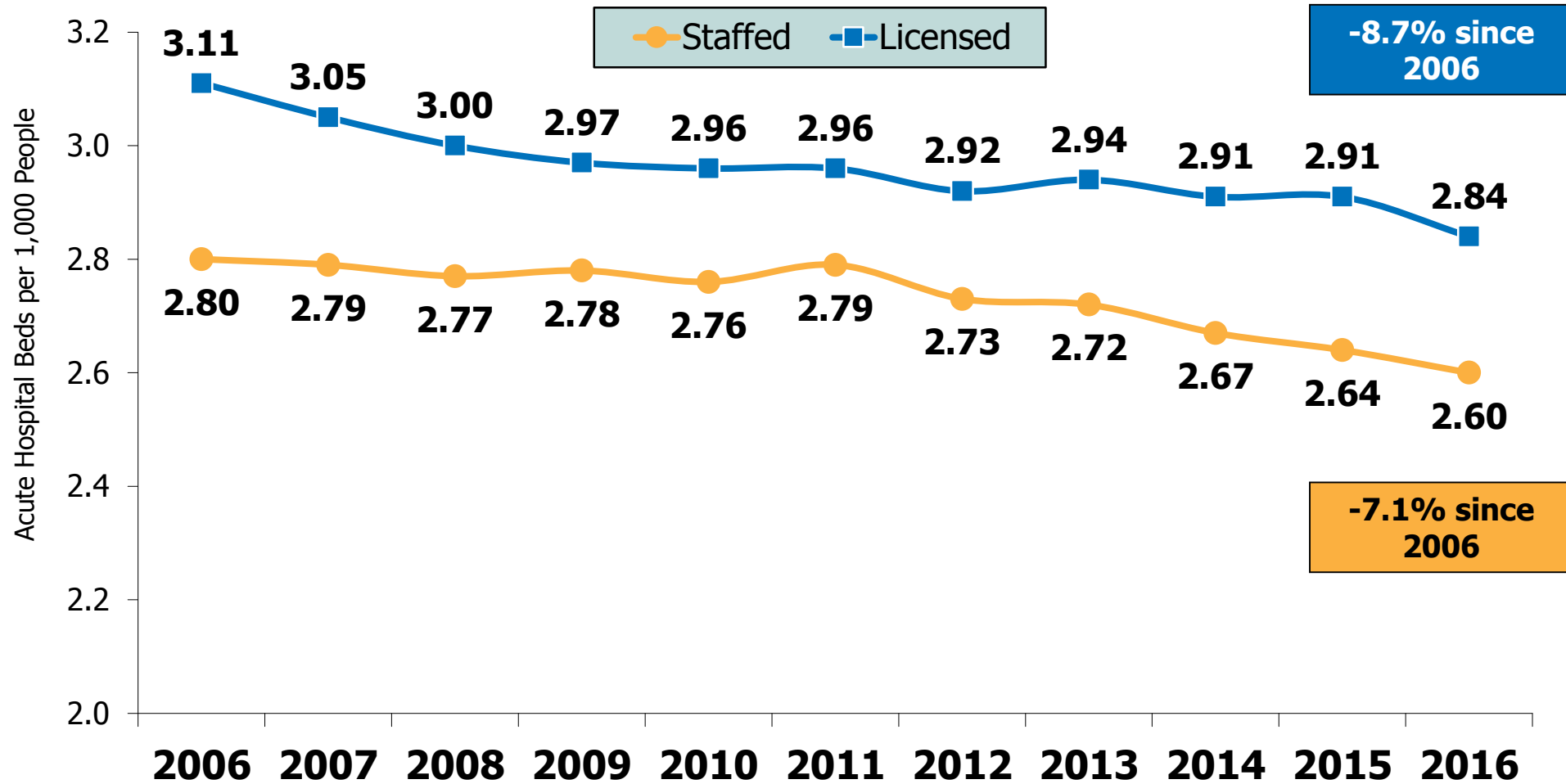
Pennsylvania General Acute Care Hospitals



Source: Pennsylvania Department of Health. Note: 2016 is calendar year; all previous years are fiscal year data

Hospital Beds per 1,000 Population

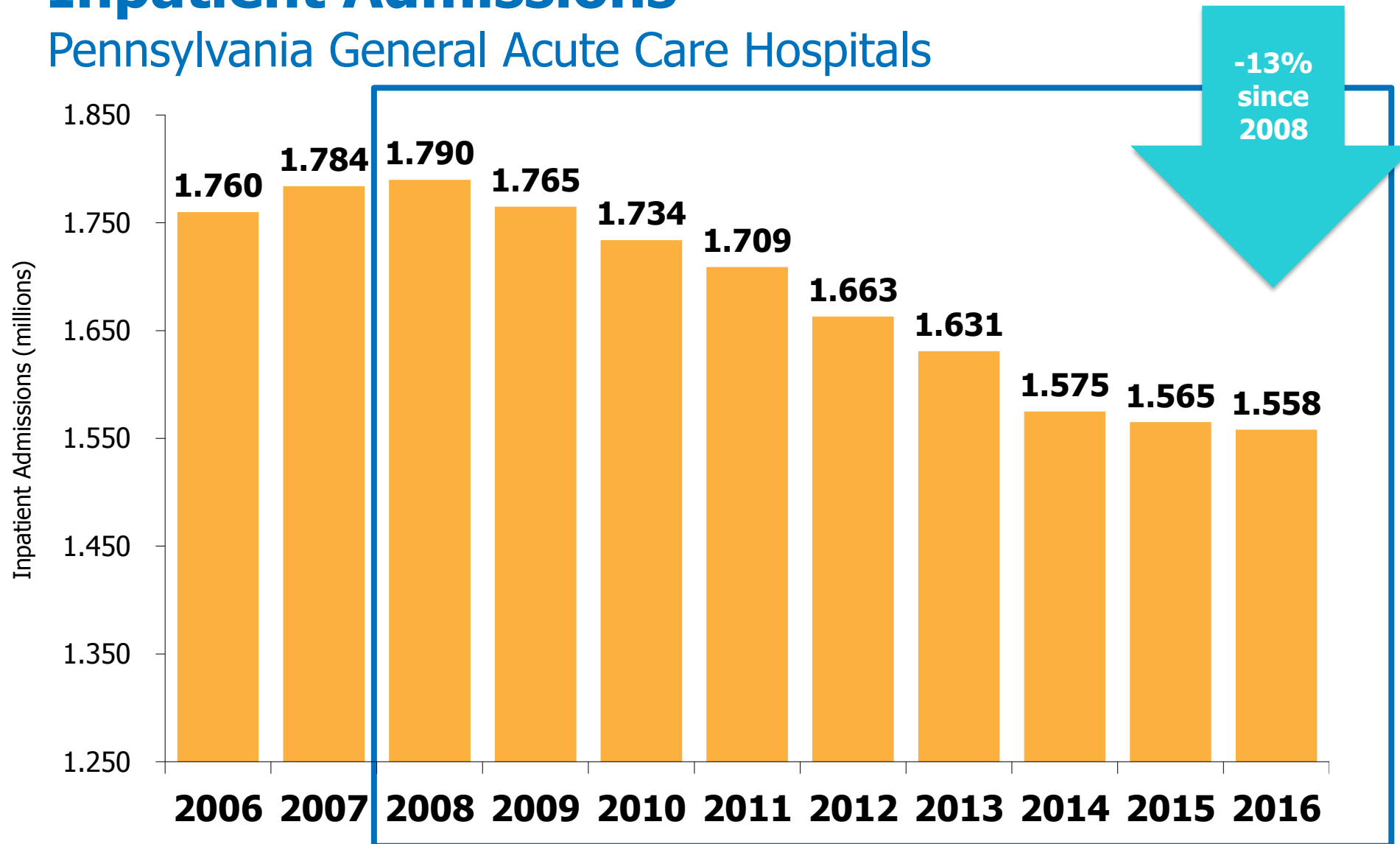
Pennsylvania General Acute Care Hospitals



Source: Pennsylvania Department of Health. Note: 2016 is calendar year; all previous years are fiscal year data

Inpatient Admissions

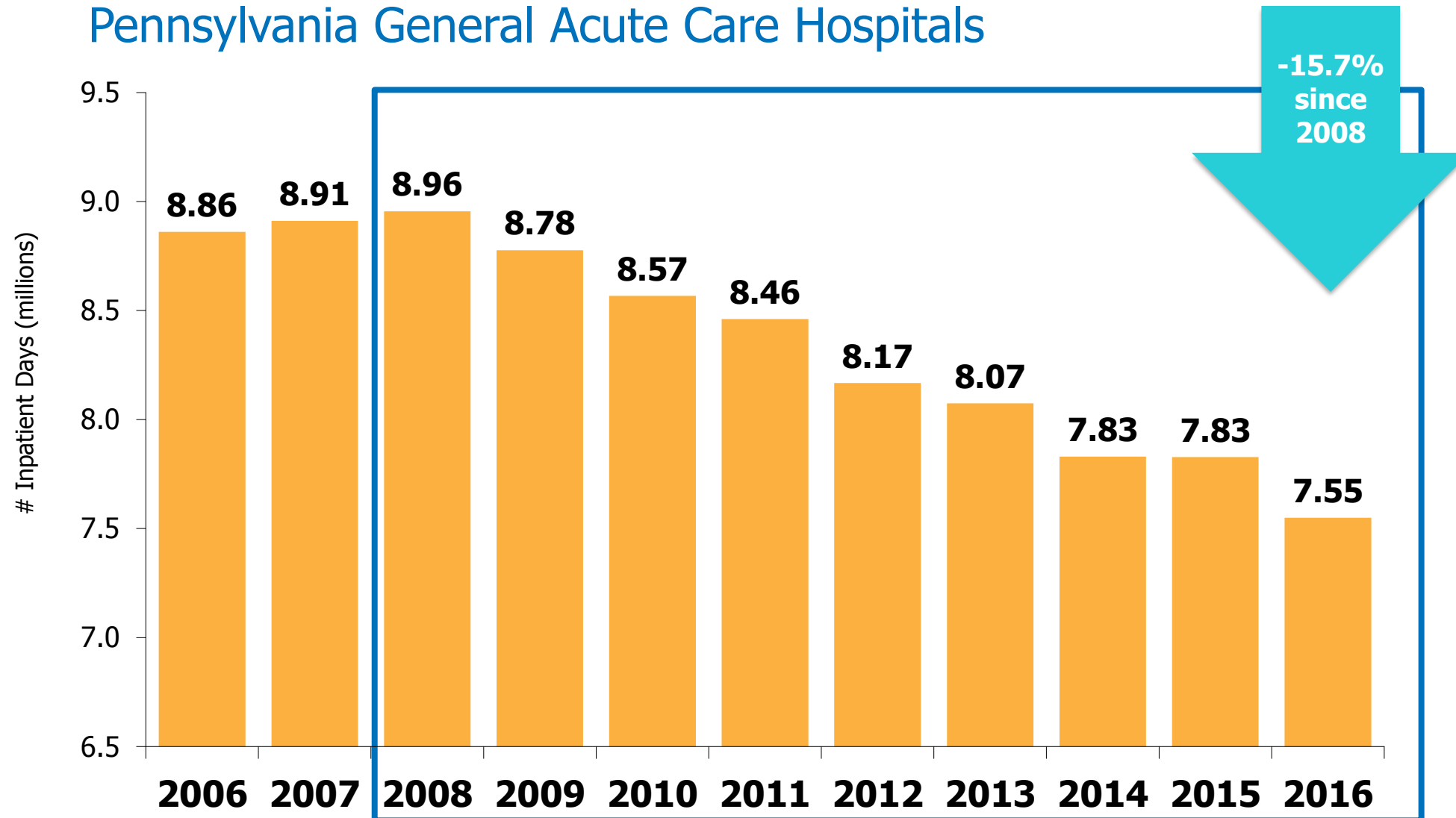
Pennsylvania General Acute Care Hospitals



Source: Pennsylvania Department of Health. Note: 2016 is calendar year; all previous years are fiscal year data

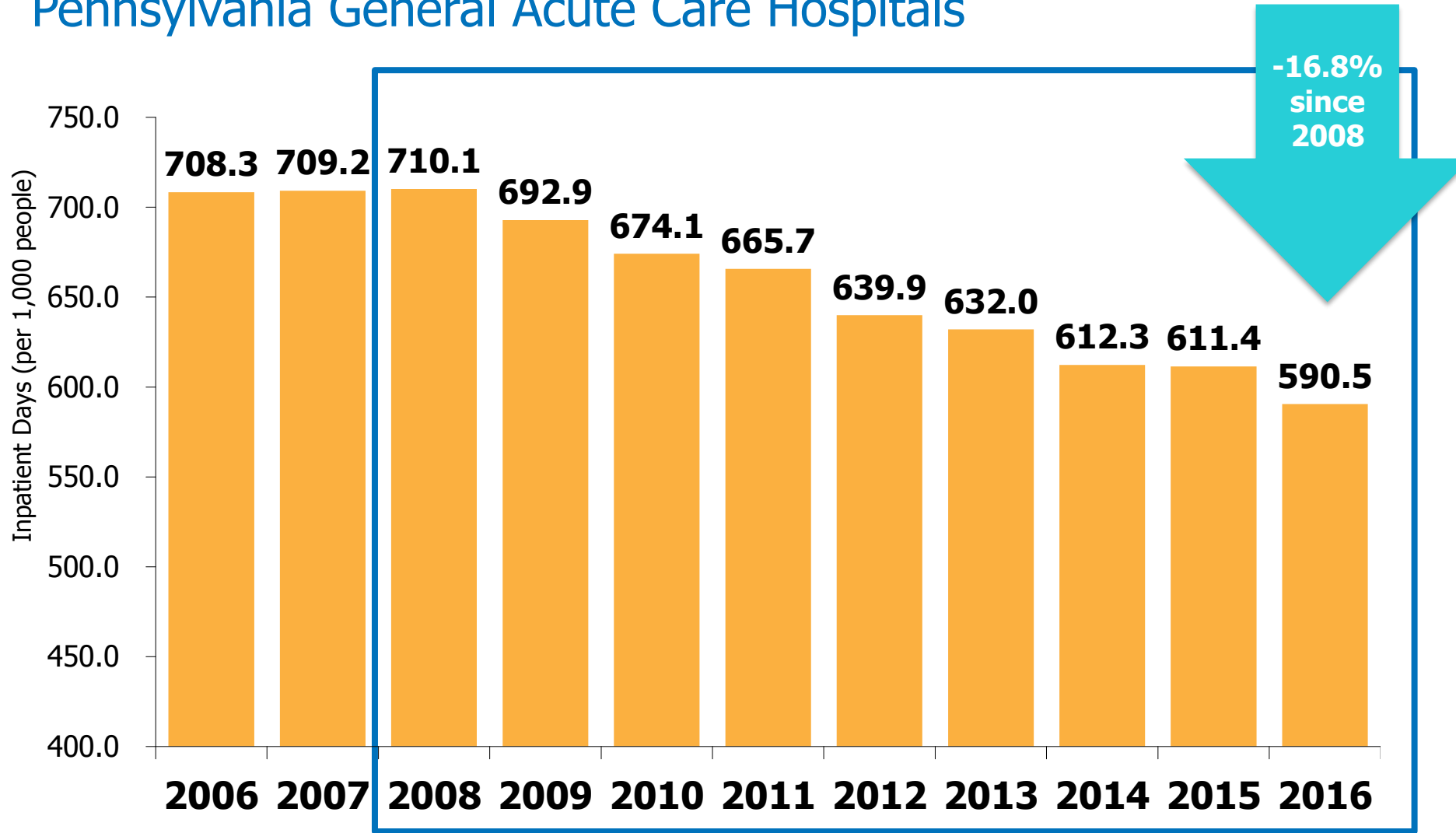
Inpatient Days

Pennsylvania General Acute Care Hospitals



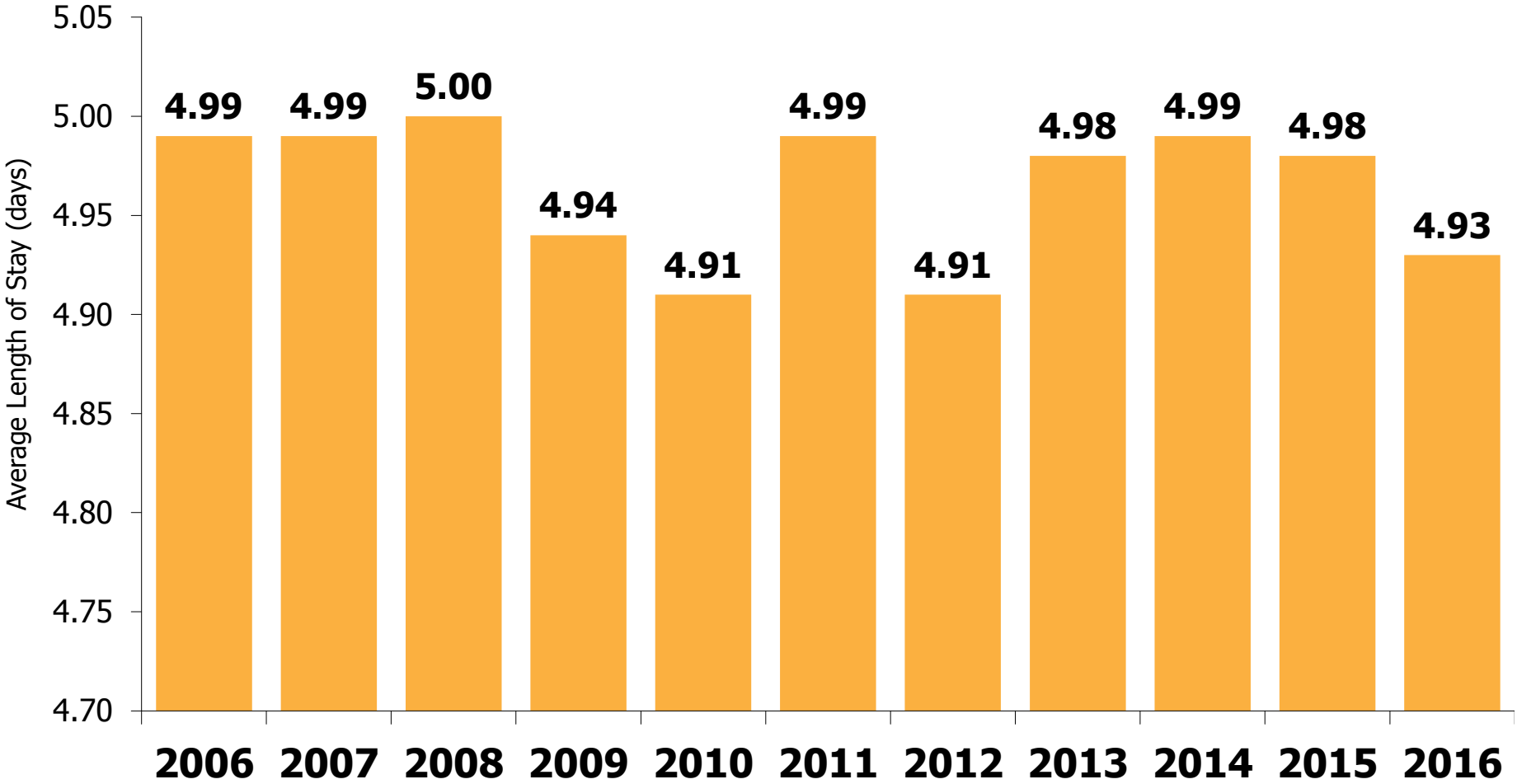
Inpatient Days per 1,000 Population

Pennsylvania General Acute Care Hospitals



Average Length of Stay

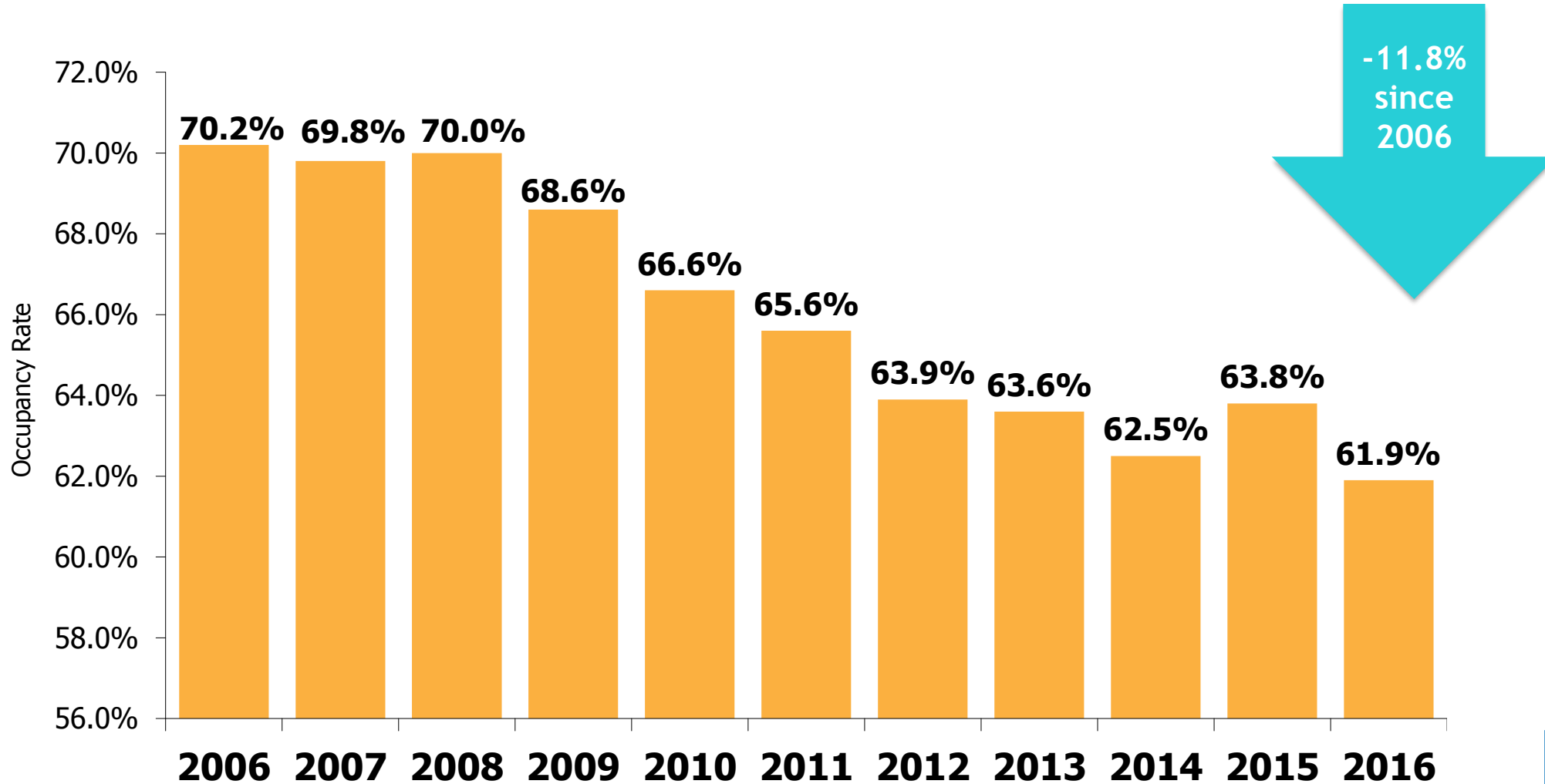
Pennsylvania General Acute Care Hospitals



Source: Pennsylvania Department of Health. Note: 2016 is calendar year; all previous years are fiscal year data

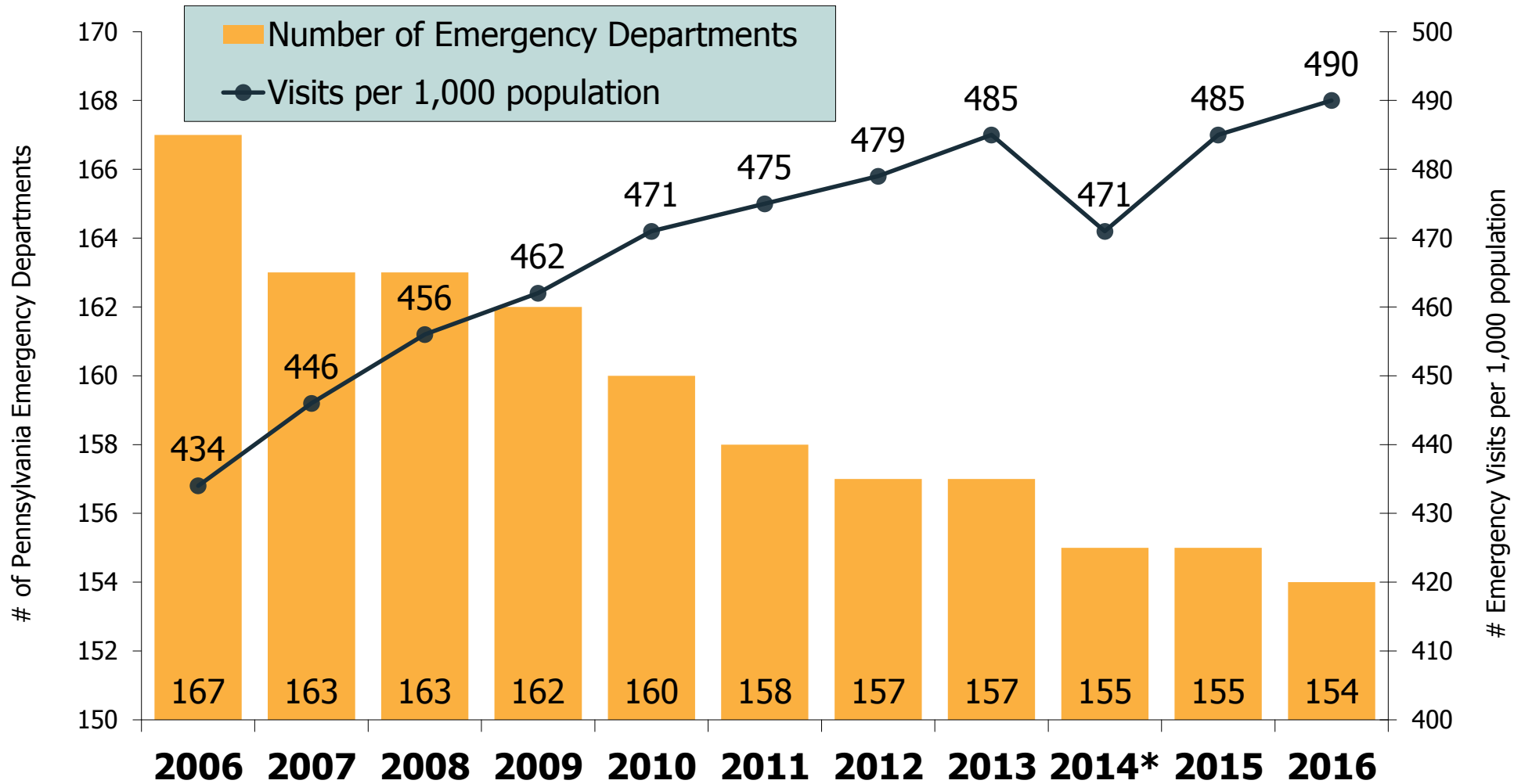
Occupancy Rate

Pennsylvania General Acute Care Hospitals



Source: Pennsylvania Department of Health. Note: 2016 is calendar year; all previous years are fiscal year data

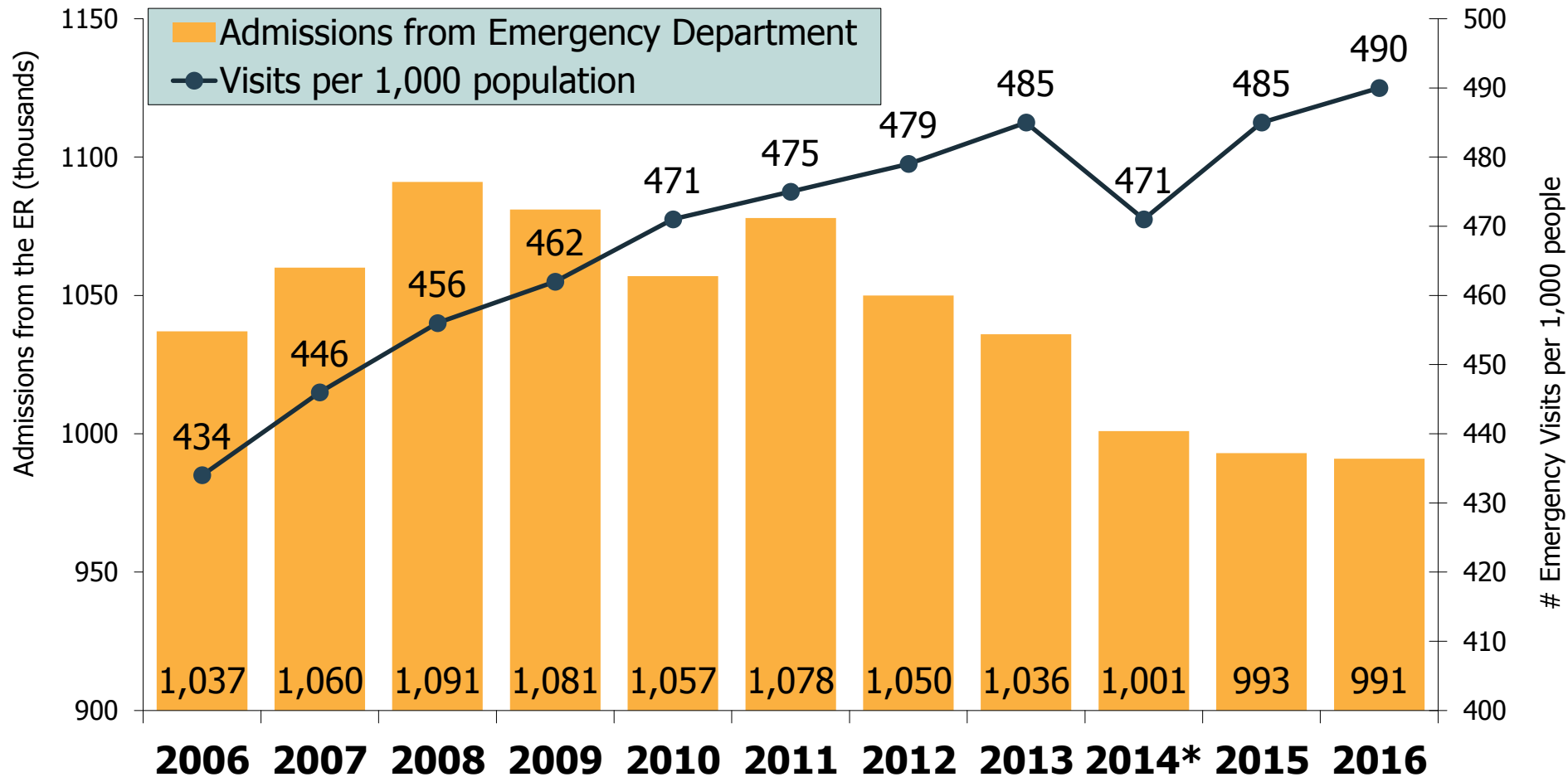
Emergency Department Visits



*The drop in Emergency Department utilization reflects several closures, market declines, and possible data submission errors.

Source: Pennsylvania Department of Health. Note: 2016 is calendar year; all previous years are fiscal year data

Emergency Visits and Inpatient Admissions from the Emergency Department

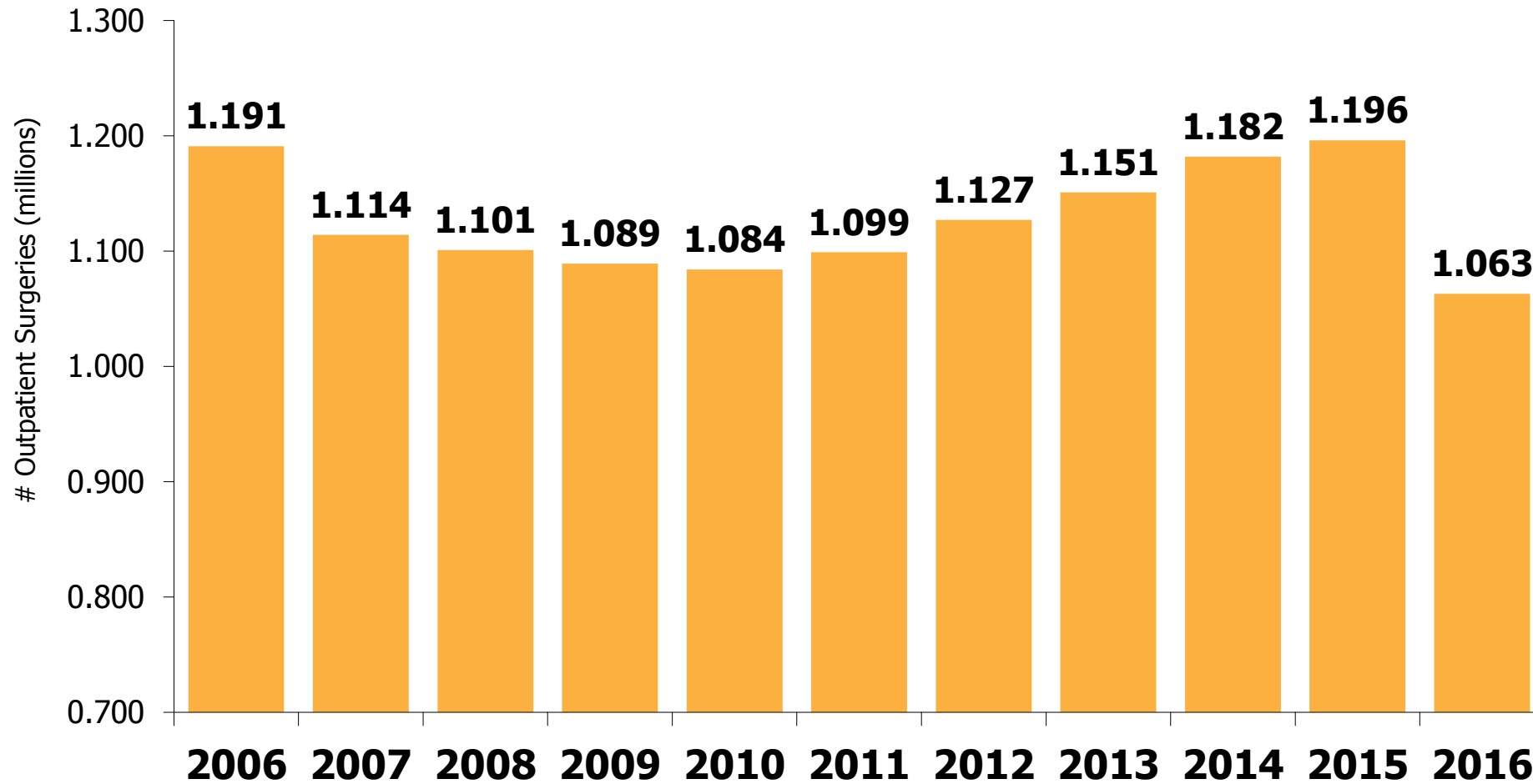


*The drop in Emergency Department utilization reflects several closures, market declines, and possible data submission errors.

Source: Pennsylvania Department of Health. Note: 2016 is calendar year; all previous years are fiscal year data

Outpatient Surgeries

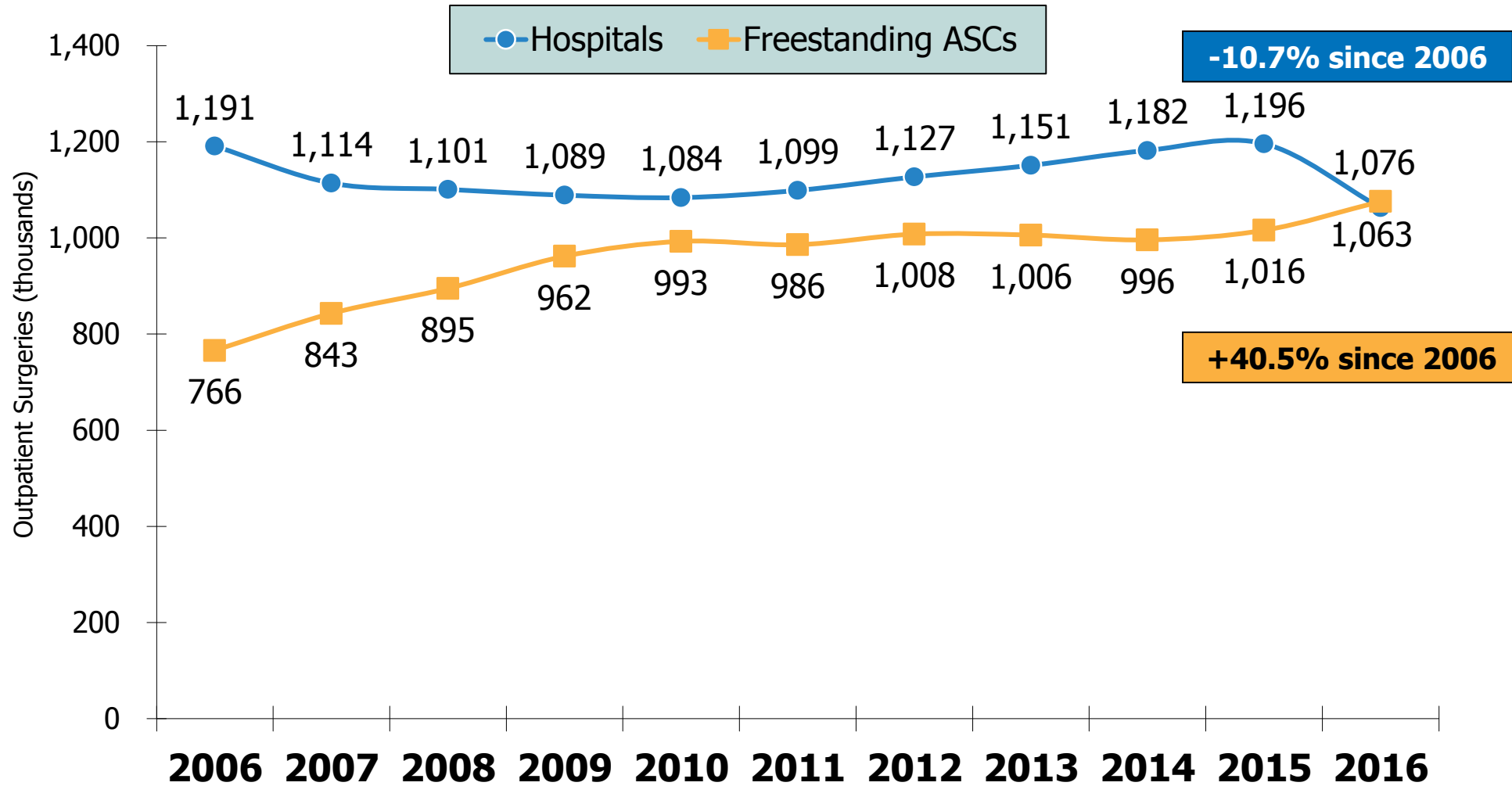
Pennsylvania General Acute Care Hospitals



Source: Pennsylvania Department of Health. Note: 2016 is calendar year; all previous years are fiscal year data

Outpatient Surgeries

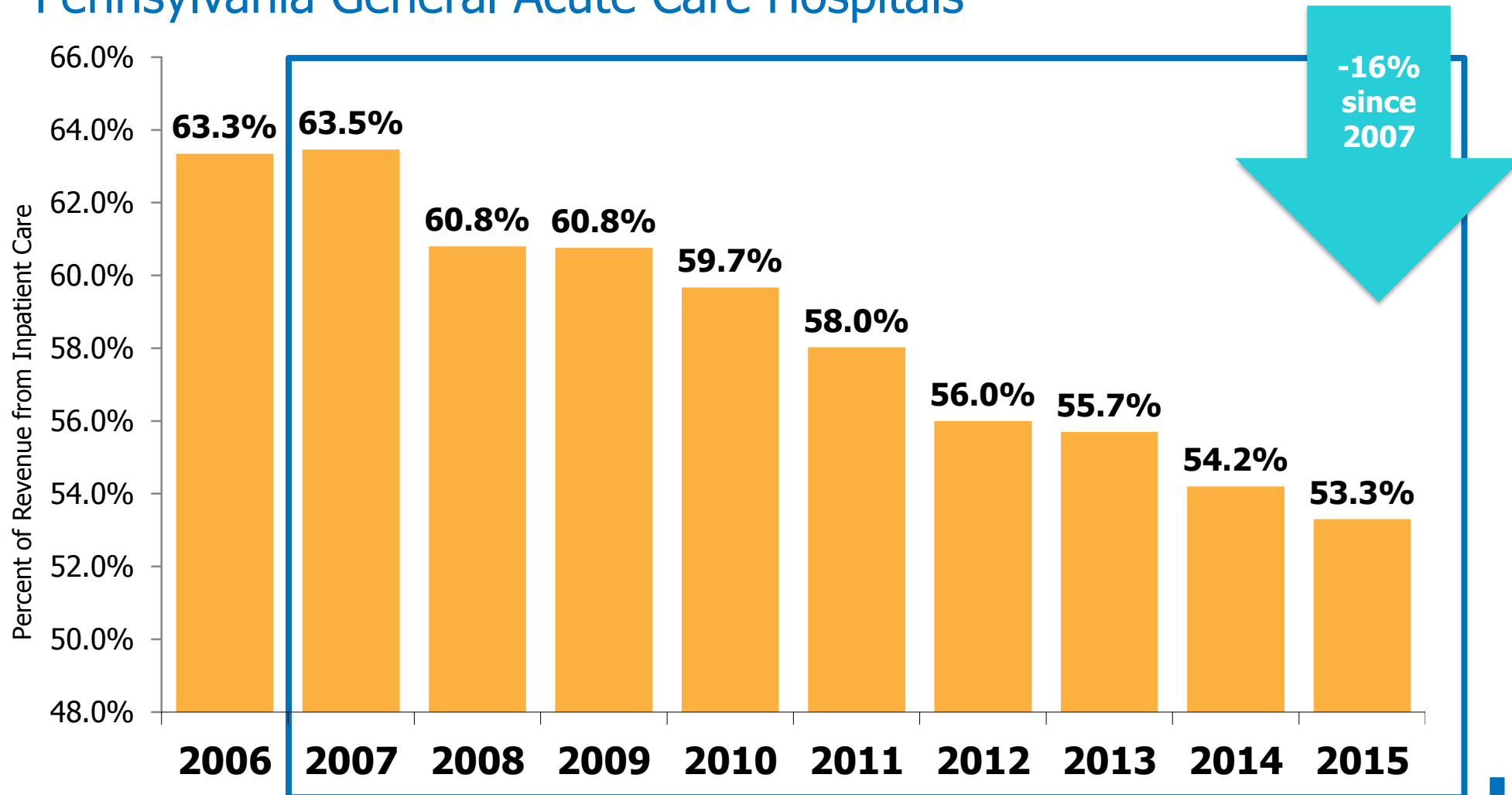
Pennsylvania Hospitals vs. Free-standing Ambulatory Surgery Centers



Source: Pennsylvania Department of Health. Note: 2016 is calendar year; all previous years are fiscal year data

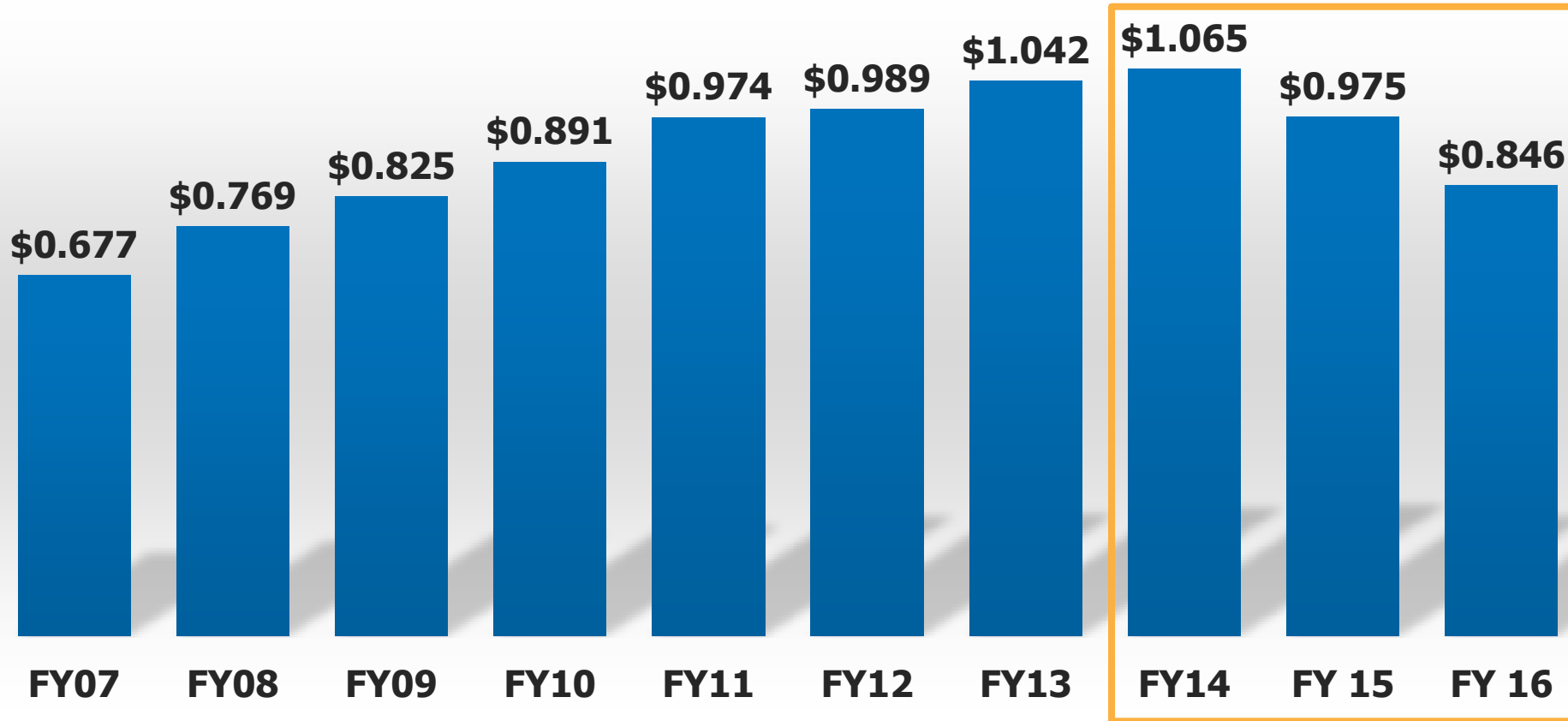
Percent of Revenue from Inpatient Care

Pennsylvania General Acute Care Hospitals



Uncompensated Care

Uncompensated Care¹ in PA Hospitals (billions)

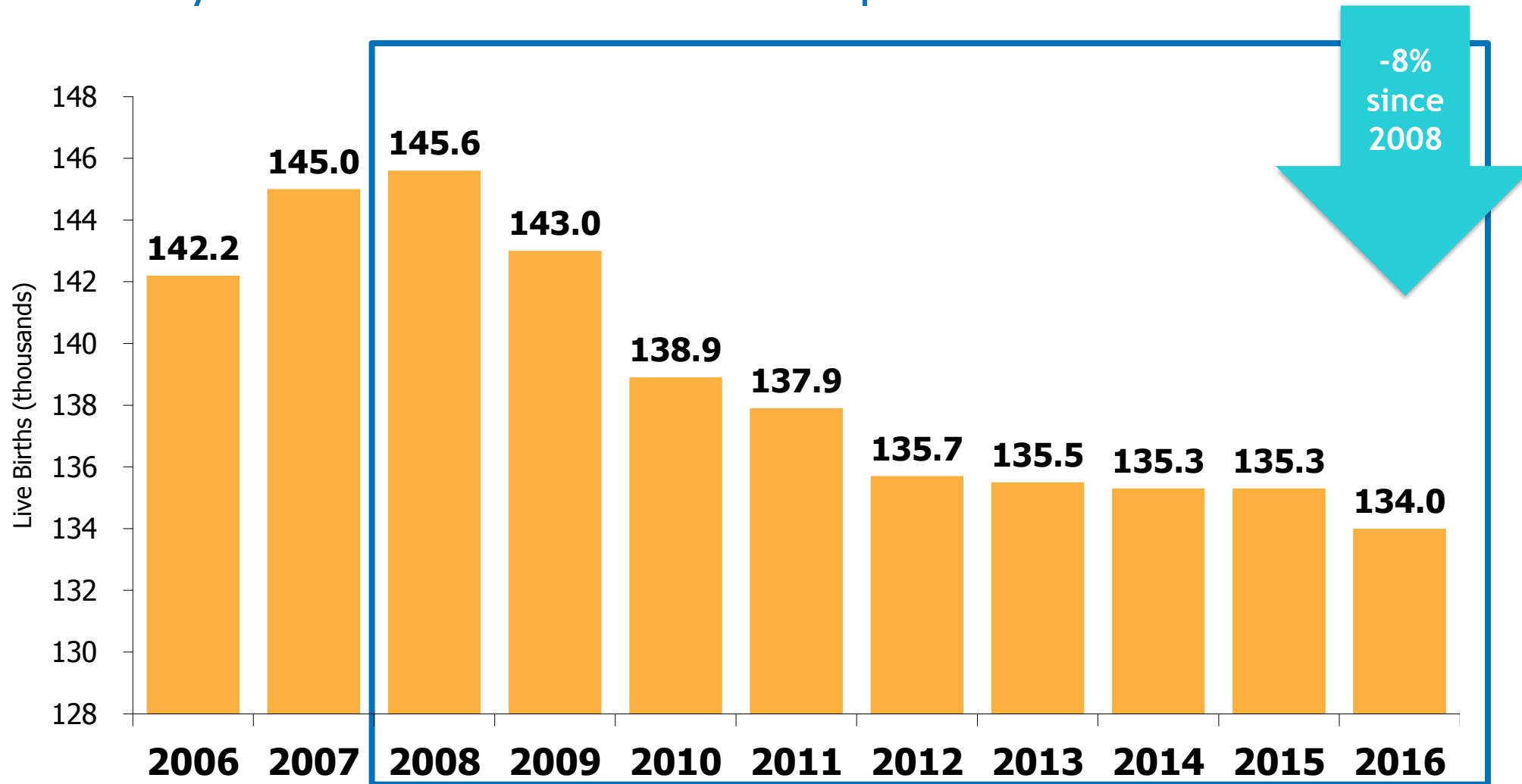


-21% decrease since FY 2014, implementation of the ACA

¹Figures reflect general acute care hospital bad debt and charity care at cost.
Source: HAP analysis of Pennsylvania Health Care Cost Containment Council data

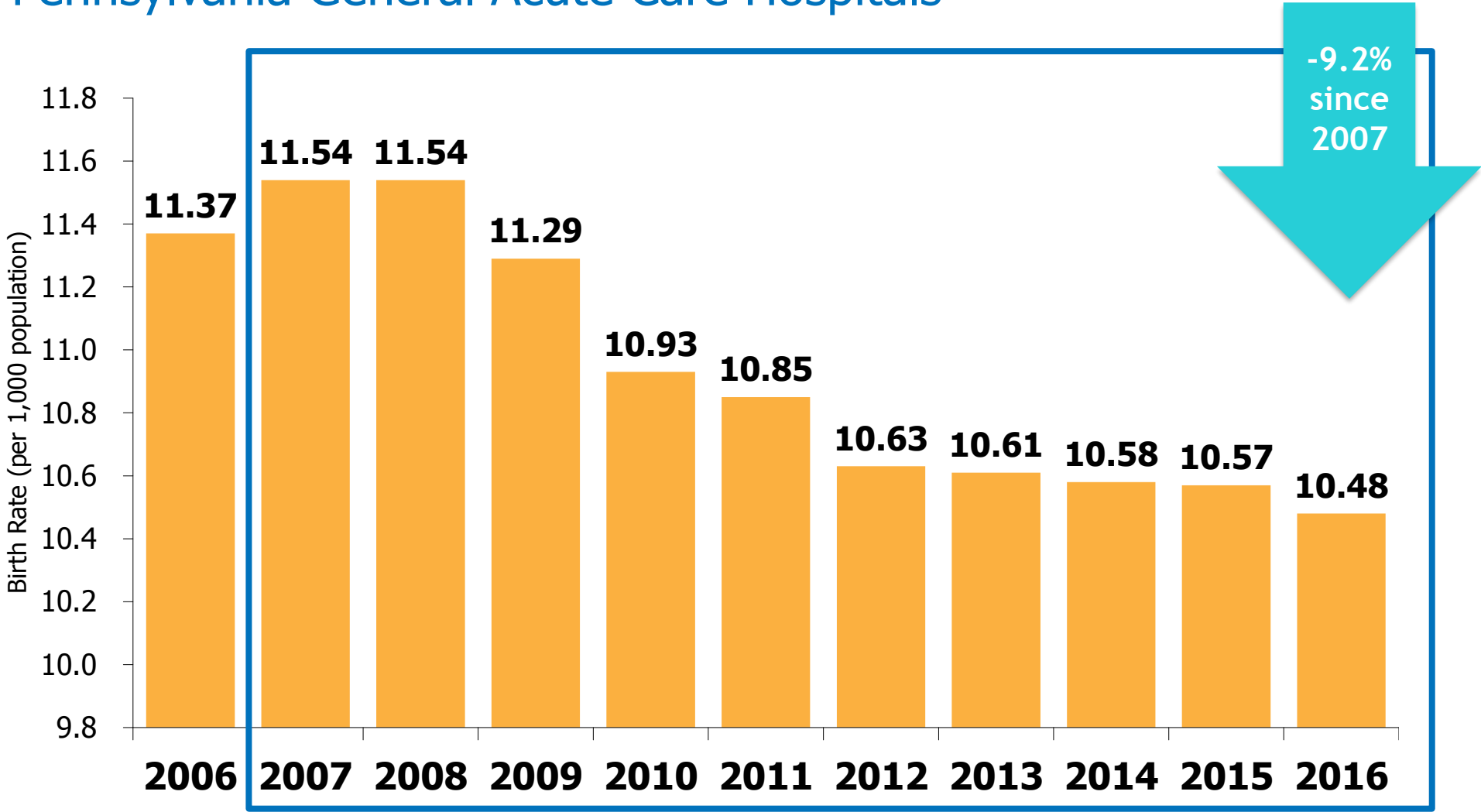
Live Births

Pennsylvania General Acute Care Hospitals



Live Births per 1,000 People

Pennsylvania General Acute Care Hospitals



Source: Pennsylvania Department of Health. Note: 2016 is calendar year; all previous years are fiscal year data



Leading for Better Health

HAP is a statewide membership services organization that advocates for more than 240 Pennsylvania acute and specialty care, primary care, subacute care, long-term care, home health, and hospice providers, as well as the patients and communities they serve. Additional information about HAP is available online at www.haponline.org.

